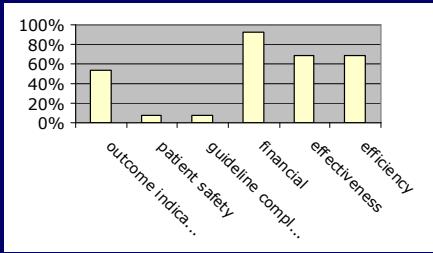
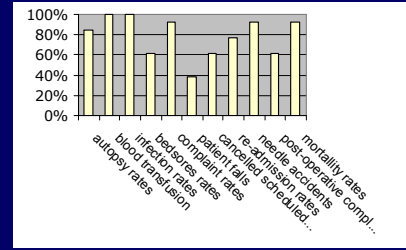


Quality Indicators Used



Activities measured by indicators



Comments: In many cases the project PATH provided an introduction to indicators for hospitals. Most indicators are used to assess economic performance of the hospitals, which is in concordance with current health policy. Use of outcome indicators is sporadic, however it is reported to be up to 50%. Data availability is rather good, perhaps too optimistic in some instances. Results from the PATH project provide evidence that most of the requested data is available.

